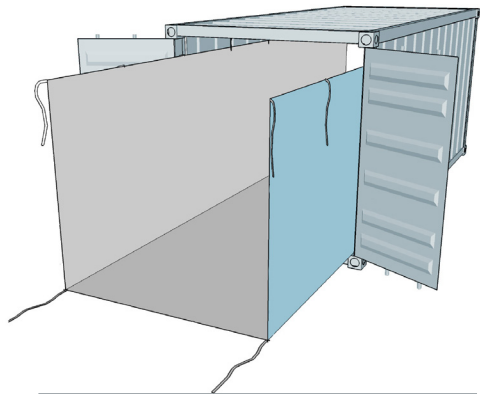


P/N: 12452BLU

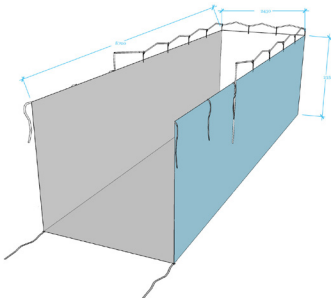
Woven HDPE Open Top Bulk Container Liner with Bands & Clips Suits 6.1m (20') GP Container



Silverback's bulk open top container liners are durable and offer water resistance for wet cargo such as animal hides. Lining the liner floor area with saw dust or another absorbent material is recommended for use with wet cargo.

Each liner comes supplied with a single length rope to secure and pass through the container roof lashing points.

Specifications



Dimensions:

- **Length:** 8700mm
- **Width:** 2430mm
- **Height:** 2350mm

Material:

- Polyethylene woven 110gsm, coated blue and grey

Installation Features:

- 20 round elastic cord loops attached to the top of liner
- 20 plastic snap hooks that attach to each cord loop and then clip on to rope
- 4 ties, 20mm x 750mm white
- 1 rope, Ø5mm x 18m length

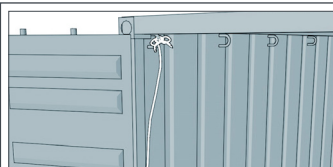
Unloading Features:

- Discharge, full opening

Packaging:

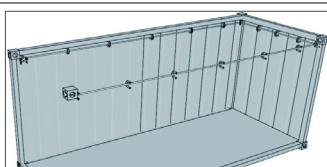
- Net weight per 1 Liner, 9kg
- 55 liners bulk packed & vacuum sealed per pallet
- Weight per pallet of 55 liners, 505kg
- Pallet count per 20' container. 20 pallets x 55 liners = 1100 liners

Installation



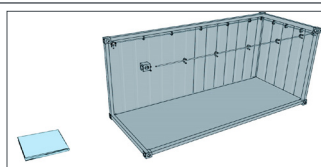
1.

Tie one end to the top lashing lug closest to the left hand side door hinge at the top of the container wall.



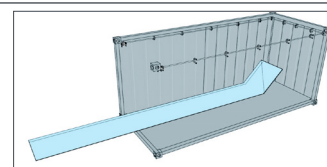
2.

Thread the rest of the rope through all of the top corner lashing lugs. Keep the tie rope tight during this process and tie off at the top lashing lug closest to the hinge of the right hand side door. It is paramount for the tie rope to be very tight, if loose the weight of the liner will stretch the rope downward and cause the liner to sag.



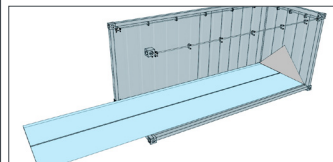
3.

Place the folded liner on the ground 2 meters outside the container doors.



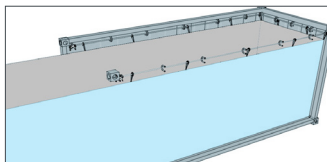
4.

Unfold the liner into the container, when liner is fully extended it should touch the front wall.



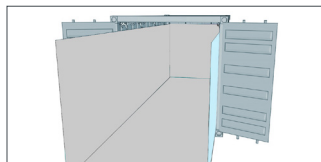
5.

Unfold the liner so it covers the floor and touches the walls.



6.

Locate clips on the top of the liner walls and clip them onto the tie rope. Repeat the process right around the corresponding wall and front.



7.

The liner will be hanging roughly and needs straightening. Do this by tightening up the front wall and ensure the corners of the liner are in the corners of the container. Then gradually work your way down the container shuffling the clips to the correct position and shuffling the liner towards the walls and doors. Double check that the liner is hanging correctly. If it isn't the tie rope may not be tight enough or the clips have not been located correctly.



8.

The liner will extend out the doors by approx 2 meters. Fold this into the container and close the doors. A plastic seal or tamper evident tape can be applied across the main seal, indicating that the container is lined.



SILVERBACK

(AUS) **1300 858 858** www.silverback.com.au

(NZ) **+64 9 320 4090** www.silverback.co.nz